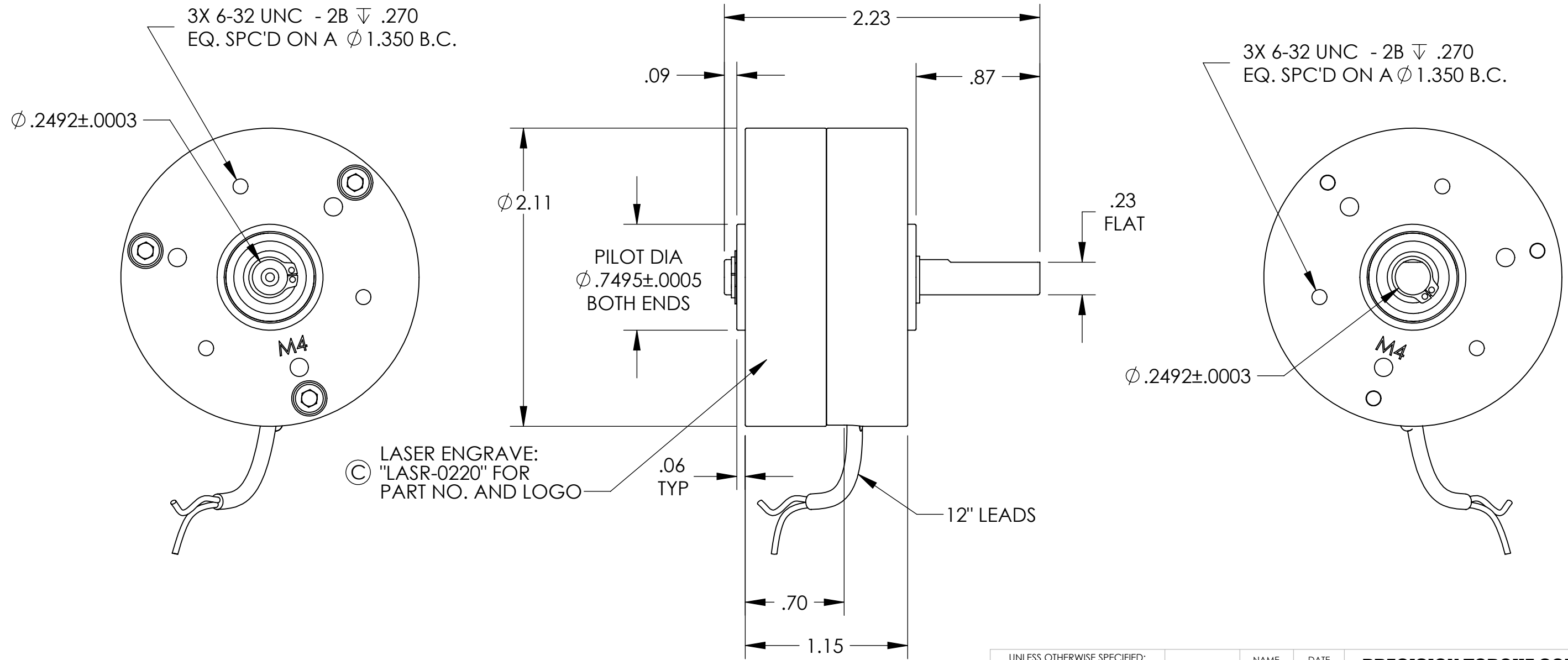


AVAILABLE VOLTAGES: 24, 90 VDC  
 RATED TORQUE: 2 LB-IN  
 MAX. DRAG TORQUE: 0.4 LB-IN  
 MAX. HEAT DISSIPATION: 10 WATTS

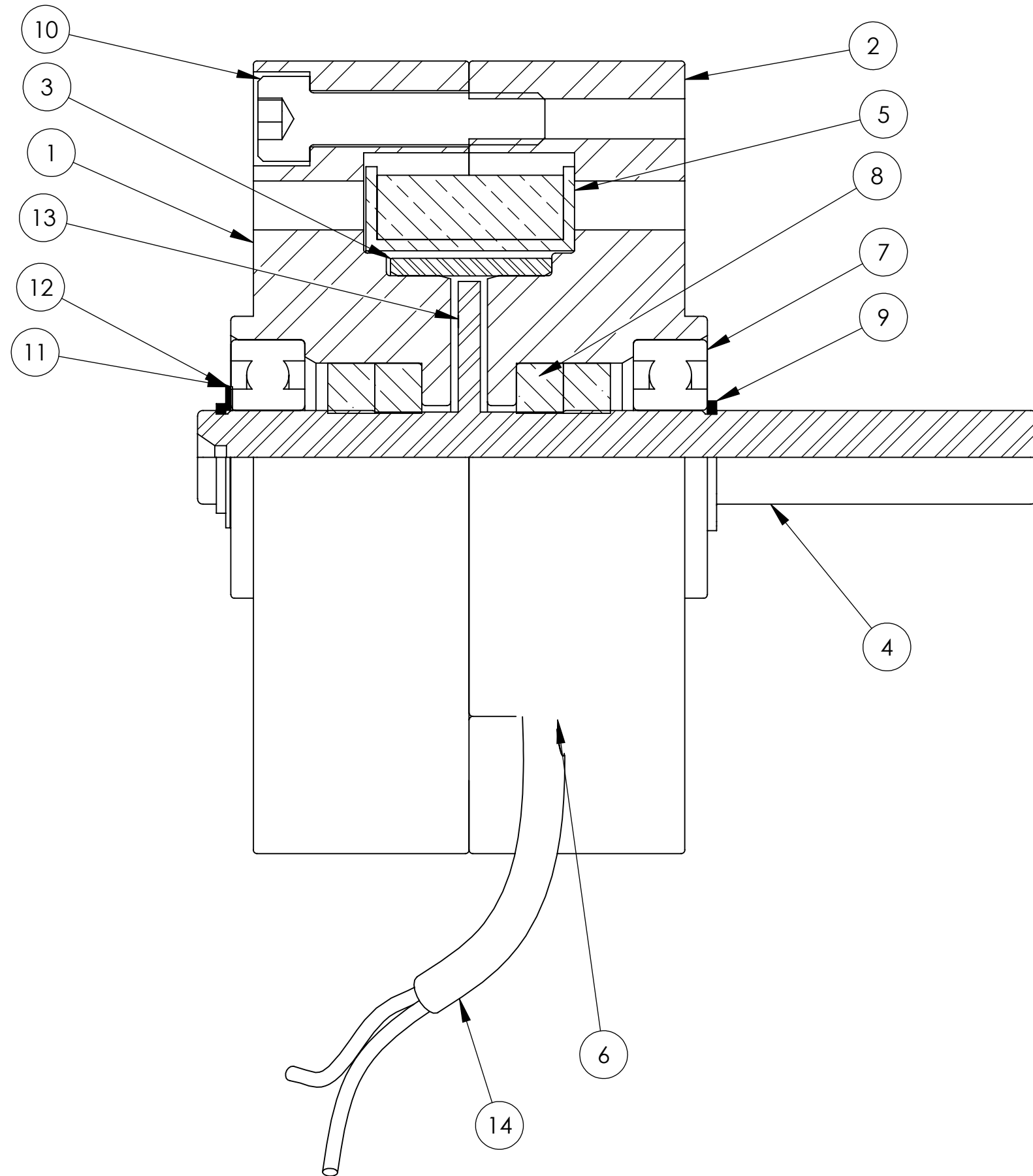


REV.	DESCRIPTION	DATE	NUMBER
C	REPLACE STICKER LABEL WITH LASER ENGRAVE	1/12/2023	2408
B	REPLACE GREASE SEAL WITH FELT SEAL	6/17/2009	678
A	INITIAL RELEASE IN SOLIDWORKS	5/4/2005	163

**PROPRIETARY AND CONFIDENTIAL**  
 THE INFORMATION CONTAINED IN THIS DRAWING IS THE SOLE PROPERTY OF PRECISION TORQUE CONTROL. ANY REPRODUCTION IN PART OR AS A WHOLE WITHOUT THE WRITTEN PERMISSION OF PRECISION TORQUE CONTROL IS PROHIBITED.

UNLESS OTHERWISE SPECIFIED:		NAME	DATE
DIMENSIONS ARE IN INCHES. ALL DIMENSIONS ARE PRE-FINISH. REMOVE ALL SHARP EDGES .005/.015		JHE	05-02-05
TOLERANCES: ANGULAR = $\pm$ 0.5° TWO PLACE DECIMAL = $\pm$ 0.015 THREE PLACE DECIMAL = $\pm$ 0.010		MSCOTT	09-27-05
ALL MACHINED SURFACES TO BE: PERPENDICULAR, CONCENTRIC, PARALLEL WITHIN 0.005 TIR			
DO NOT SCALE DRAWING			

PRECISION TORQUE CONTROL Midland, MI U.S.A.		
TITLE: <b>ASSEMBLY</b>		
SIZE <b>B</b>	DWG. NO. <b>MPB2-1</b>	REV <b>C</b>
SCALE: 4:3		DATE OF PRINT: 1/12/2023



NO.	PART NO.	DESCRIPTION	QTY.
1	M002-3001	END CAP	1
2	M002-3002	END CAP	1
3	M002-5001	SPACER	1
4	M002-R001	ROTOR	1
5	SEE CHART	COIL	1
6	YAD1-0006	3M HOT MELT	1
7	YBAB-0008	BEARING SEAL	2
8	YLS2-0001	FELT SEAL	4
9	YRS2-0002	EXT RET RING	2
10	YSC1-0018	SHCS 6-32 X 5/8 SS	3
11	YWS1-0004	SHIM	1
12	YWS1-0005	SHIM	1
13	YZ00-0015	MAGNETIC POWDER	1
14	YZ00-0021	SHRINK TUBE	1

MODEL	VOLTAGE	COIL#	WIRE COLOR
MPB2-1-24	24 VDC	M002-C024	RED
MPB2-1-90	90 VDC	M002-C090	BLACK

**PROPRIETARY AND CONFIDENTIAL**  
 THE INFORMATION CONTAINED IN THIS DRAWING IS THE SOLE PROPERTY OF PRECISION TORQUE CONTROL. ANY REPRODUCTION IN PART OR AS A WHOLE WITHOUT THE WRITTEN PERMISSION OF PRECISION TORQUE CONTROL IS PROHIBITED.

UNLESS OTHERWISE SPECIFIED:  
 DIMENSIONS ARE IN INCHES.  
 ALL DIMENSIONS ARE PRE-FINISH.  
 REMOVE ALL SHARP EDGES .005/.015

TOLERANCES:  
 ANGULAR = ±0.5°  
 TWO PLACE DECIMAL = ±0.015  
 THREE PLACE DECIMAL = ±0.010

ALL MACHINED SURFACES TO BE:  
 PERPENDICULAR, CONCENTRIC,  
 PARALLEL WITHIN 0.005 TIR

DO NOT SCALE DRAWING

	NAME	DATE
DRAWN	JHE	05-02-05
ENG APPR.	MSCOTT	09-27-05
DENSITY:	lbs/cu in	
WEIGHT:	1.080 lbs	
INERTIA:	lbs sq in	
MATERIAL	STEEL	
FINISH	YELLOW DICHROMATE	

<b>PRECISION TORQUE CONTROL</b> Midland, MI U.S.A.		
TITLE: <b>ASSEMBLY</b>		
SIZE <b>B</b>	DWG. NO. <b>MPB2-1</b>	REV <b>C</b>
SCALE: 3:1	DATE OF PRINT: 1/12/2023	